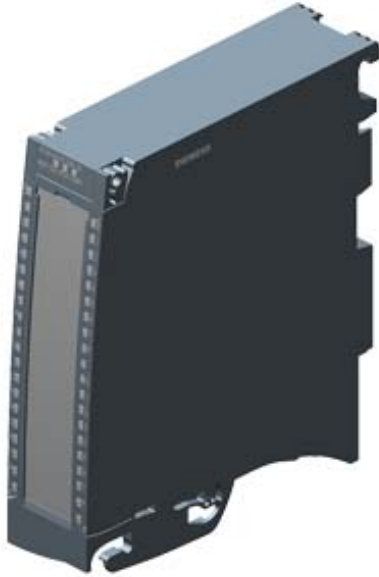


SIMATIC S7-1500, Digital output module DQ 32x24 V DC/0.5A HF;  
32 channels in groups of 8; 4 A per group; Single-channel  
diagnostics; Substitute value



General information	
Product type designation	DQ 32x24VDC/0.5A HF
HW functional status	FS01
Firmware version	V1.0.0
Product function	
• I&M data	Yes; I&M0 to I&M3
Engineering with	
• STEP 7 TIA Portal configurable/integrated as of version	V13 SP1 / -
• PROFIBUS as of GSD version/GSD revision	V1.0 / V5.1
• PROFINET as of GSD version/GSD revision	V2.3 / -
Operating mode	
• DQ	Yes
• DQ with energy-saving function	No
• PWM	No
• Oversampling	No
• MSO	Yes
Supply voltage	

Type of supply voltage	DC
Rated value (DC)	24 V
permissible range, lower limit (DC)	20.4 V
permissible range, upper limit (DC)	28.8 V
Reverse polarity protection	Yes; through internal protection with 7 A per group

#### Input current

Current consumption, max.	60 mA
---------------------------	-------

#### Output voltage

Rated value (DC)	24 V
------------------	------

#### Power

Power available from the backplane bus	1.1 W
--	-------

#### Power loss

Power loss, typ.	3.5 W
------------------	-------

#### Digital outputs

Type of digital output	Transistor
Number of digital outputs	32
Current-sourcing	Yes
Short-circuit protection	Yes; Clocked electronically
• Response threshold, typ.	1 A
Limitation of inductive shutdown voltage to	L+ (-53 V)
Controlling a digital input	Yes

#### Switching capacity of the outputs

• with resistive load, max.	0.5 A
• on lamp load, max.	5 W

#### Load resistance range

• lower limit	48 $\Omega$
• upper limit	12 k $\Omega$

#### Output voltage

• for signal "1", min.	L+ (-0.8 V)
------------------------	-------------

#### Output current

• for signal "1" rated value	0.5 A
• for signal "1" permissible range, max.	0.5 A
• for signal "0" residual current, max.	0.5 mA

#### Output delay with resistive load

• "0" to "1", max.	100 $\mu$ s
• "1" to "0", max.	500 $\mu$ s

#### Parallel switching of two outputs

• for logic links	Yes
• for uprating	No
• for redundant control of a load	Yes

Switching frequency	
• with resistive load, max.	100 Hz
• with inductive load, max.	0.5 Hz; According to IEC 60947-5-1, DC-13
• on lamp load, max.	10 Hz
Total current of the outputs	
• Current per channel, max.	0.5 A; see additional description in the manual
• Current per group, max.	4 A; see additional description in the manual
• Current per module, max.	16 A; see additional description in the manual
Cable length	
• shielded, max.	1 000 m
• unshielded, max.	600 m
Isochronous mode	
Isochronous operation (application synchronized up to terminal)	Yes
Execution and activation time (TCO), min.	70 µs
Bus cycle time (TDP), min.	250 µs
Interrupts/diagnostics/status information	
Diagnostics function	Yes
Substitute values connectable	Yes
Alarms	
• Diagnostic alarm	Yes
Diagnostic messages	
• Monitoring the supply voltage	Yes
• Wire-break	Yes
• Short-circuit	Yes
• Group error	Yes
Diagnostics indication LED	
• RUN LED	Yes; Green LED
• ERROR LED	Yes; Red LED
• Monitoring of the supply voltage (PWR-LED)	Yes; Green LED
• Channel status display	Yes; Green LED
• for channel diagnostics	Yes; Red LED
• for module diagnostics	Yes; Red LED
Potential separation	
Potential separation channels	
• between the channels	No
• between the channels, in groups of	8
• between the channels and backplane bus	Yes
Isolation	
Isolation tested with	707 V DC (type test)

### Decentralized operation

Prioritized startup	Yes
---------------------	-----

### Dimensions

Width	35 mm
-------	-------

Height	147 mm
--------	--------

Depth	129 mm
-------	--------

### Weights

Weight, approx.	280 g
-----------------	-------

<b>last modified:</b>	07/17/2018
-----------------------	------------